



PCL6 driver

Printer driver for B/W printing and Color printing in Windows. It supports HP PCL XL commands and is optimized for the Windows GDI. High performance can be expected.

PCL5 driver

PCL5e for black-and-white devices; PCL5c for color devices. Although this driver has mainly been superseded by PCL6, these drivers are provided for backward compatibility.

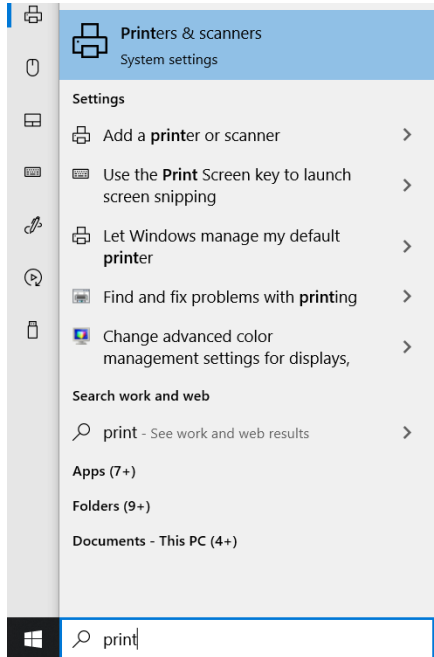
PS Driver

Requires PS optional module installed in device. By interacting with the PostScript 3 controller in the device, this driver is able to produce an accurate representation of the screen image.

To install a driver for your device, follow these steps:

- 1) First, download the driver you want to install. You can download the latest drivers and software from <https://www.ricoh-usa.com/en/support-and-download#> . Make sure that you download the correct version for your operating system. Once downloaded, run the file to extract the compressed printer files and save it in a temporary directory to access later.

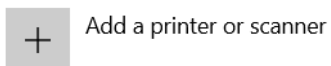
- 2) Select the Windows button and Select “Printers & Scanners” from the menu. (you can start typing printers once you select the windows button to filter the selection list)



- 3) Select “Add a printer or scanner”

Printers & scanners

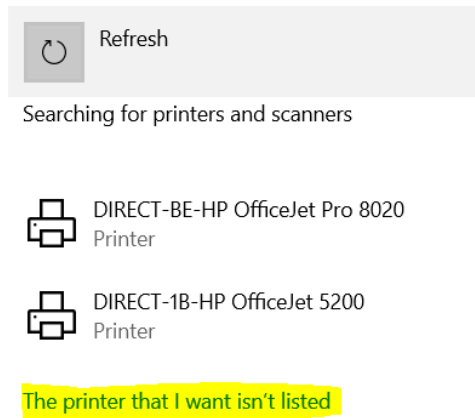
Add printers & scanners



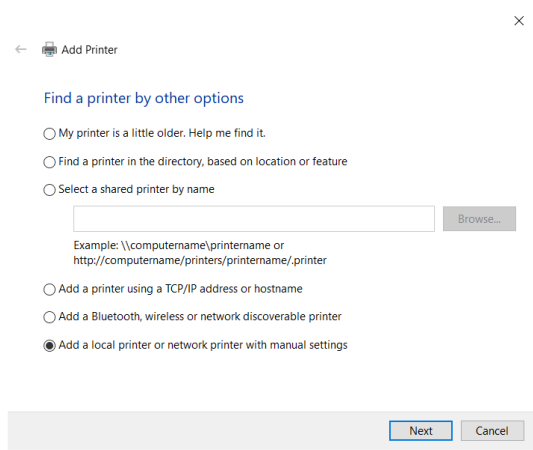
- 4) Select “The printer that I want isn’t listed” (note: if you select the printer from the list instead it will attempt to install with the incorrect generic driver)

Printers & scanners

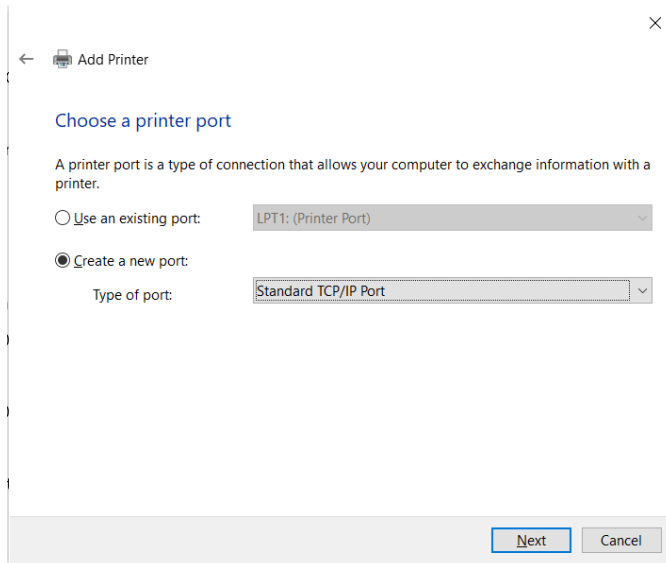
Add printers & scanners



- 5) Select “Add a local printer or network printer with manual settings”



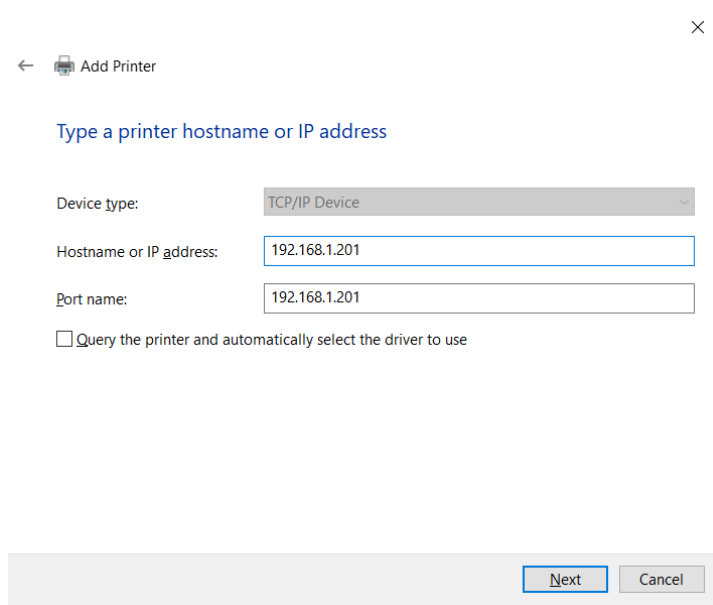
- 6) Select “Create a new port” and then select “Standard TCP/IP Port” from the drop down menu.



The screenshot shows the 'Add Printer' dialog box with the title 'Add Printer'. Below the title is a back arrow and a printer icon. The main heading is 'Choose a printer port'. A descriptive text reads: 'A printer port is a type of connection that allows your computer to exchange information with a printer.' There are two radio button options: 'Use an existing port:' with a dropdown menu showing 'LPT1: (Printer Port)', and 'Create a new port:' which is selected. Under 'Create a new port:', there is a 'Type of port:' label and a dropdown menu showing 'Standard TCP/IP Port'. At the bottom right, there are 'Next' and 'Cancel' buttons.

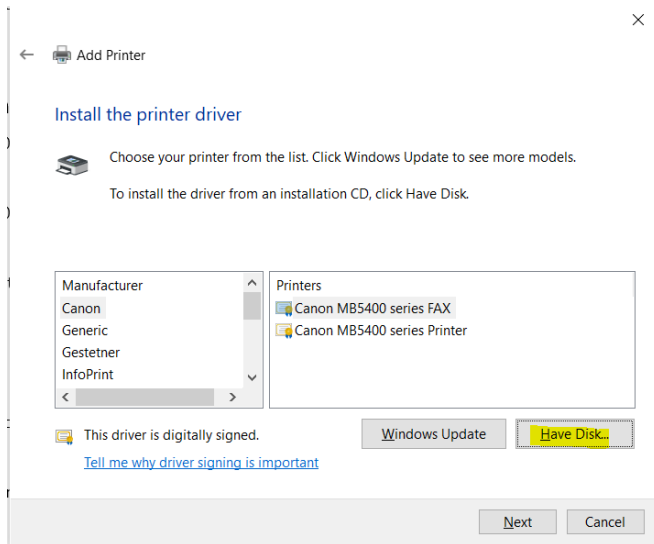
- 7) Type your device’s IP address in the “Hostname or IP Address” box and then select “Next”.

Here “192.168.1.201” has been entered as an example.

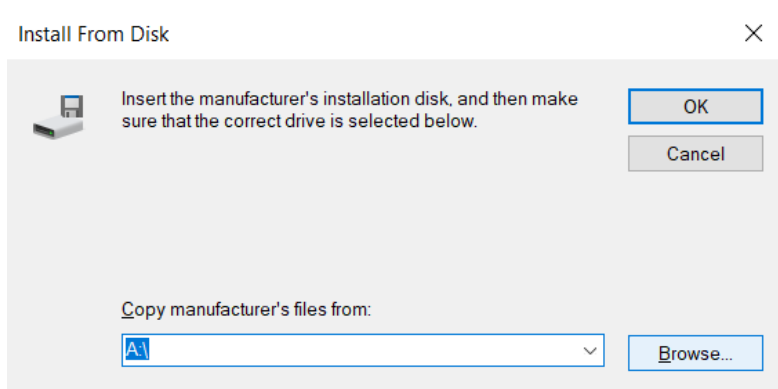


The screenshot shows the 'Add Printer' dialog box with the title 'Add Printer'. Below the title is a back arrow and a printer icon. The main heading is 'Type a printer hostname or IP address'. There are three input fields: 'Device type:' with a dropdown menu showing 'TCP/IP Device', 'Hostname or IP address:' with a text box containing '192.168.1.201', and 'Port name:' with a text box containing '192.168.1.201'. Below these fields is a checkbox labeled 'Query the printer and automatically select the driver to use', which is currently unchecked. At the bottom right, there are 'Next' and 'Cancel' buttons.

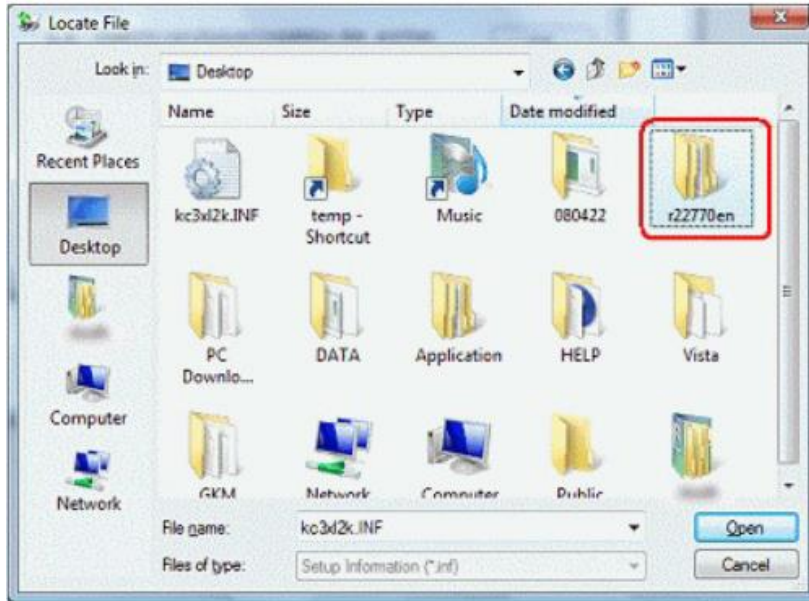
8) Select "Have Disk"



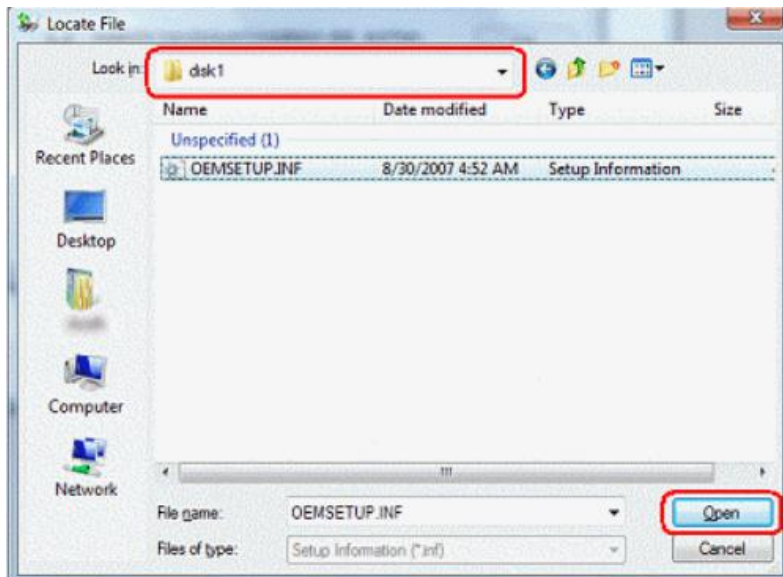
9) Select "Browse"



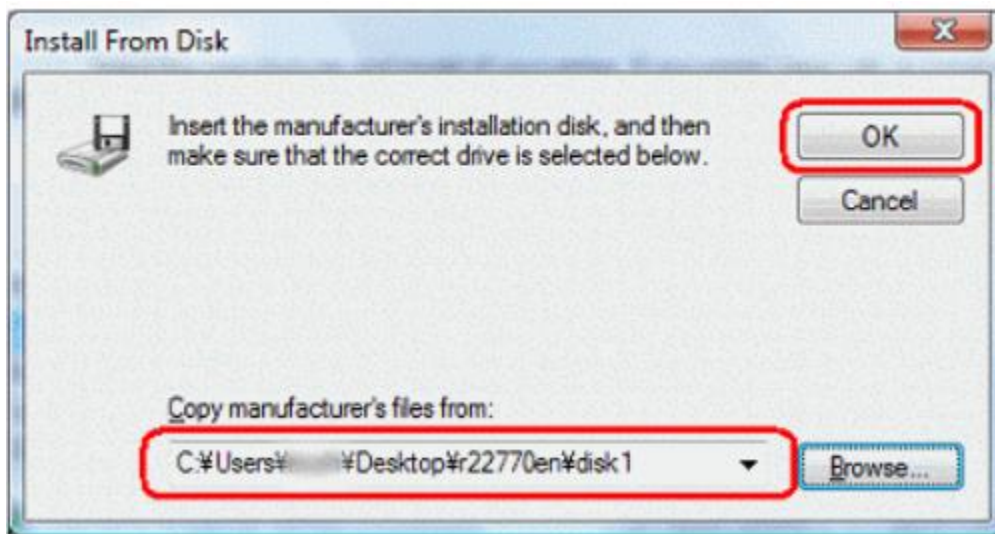
- 10) Specify the driver folder you saved earlier in step 1.
(Here we are using “r22770en” on the Desktop as an example)



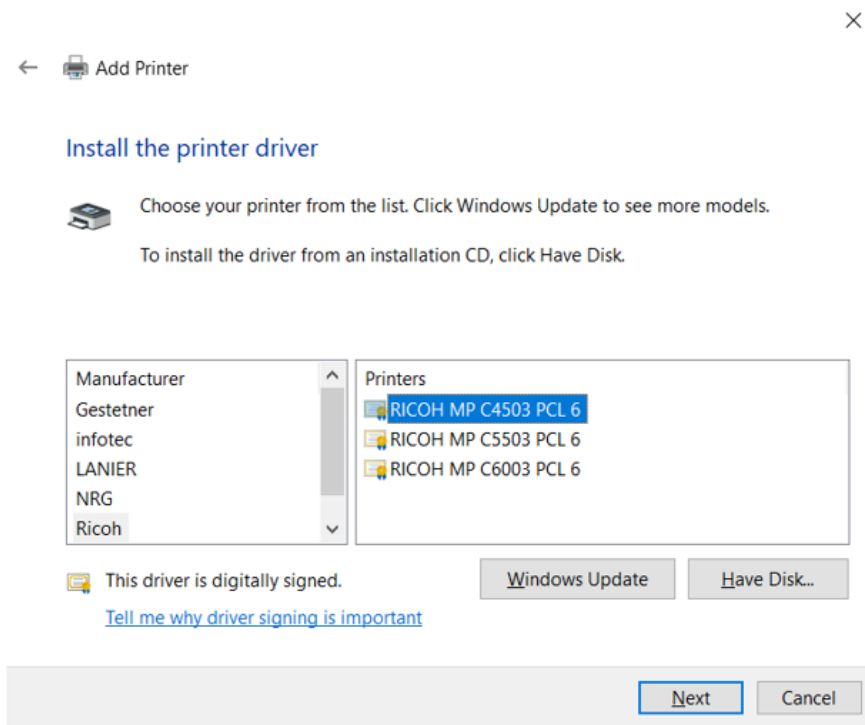
- 11) Confirm that “Disk 1” is displayed in the “Look in” box and the “.INF” file is selected in the file name and then select “Open”



- 12) Confirm that the folder located in the above step is shown in the "Copy manufacturer's files from" box, and then click [OK].



- 13) Click on your device in the "Printers" box, and then click "Next"



13) Type a Printer Name and select “Next”

← Add Printer X

Type a printer name

Printer name: RICOH MP C4503 PCL 6

This printer will be installed with the RICOH MP C4503 PCL 6 driver.

Next Cancel

14) Verify if you would like to share this printer on the network and select “Next”. (Typically would select “Do not share this printer” unless installing on a print server)

← Add Printer X

Printer Sharing

If you want to share this printer, you must provide a share name. You can use the suggested name or type a new one. The share name will be visible to other network users.

Do not share this printer

Share this printer so that others on your network can find and use it

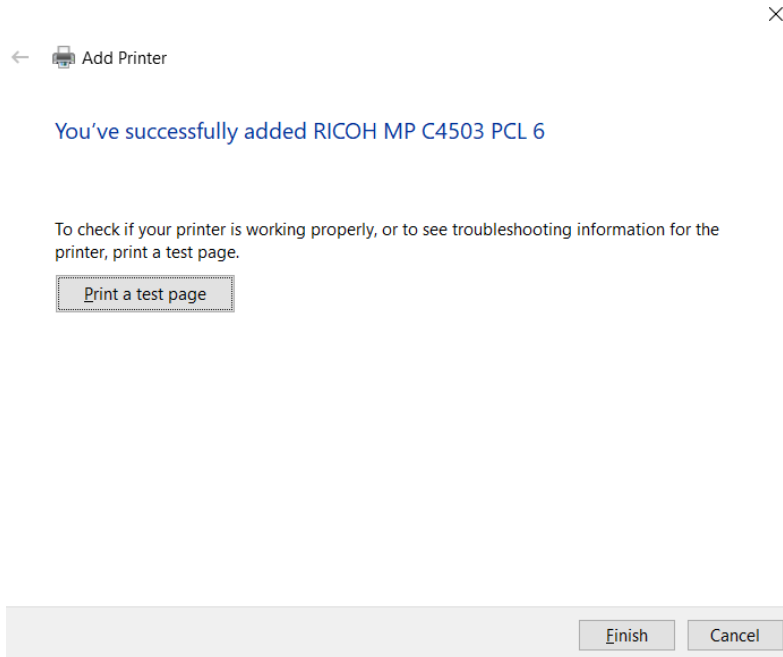
Share name:

Location:

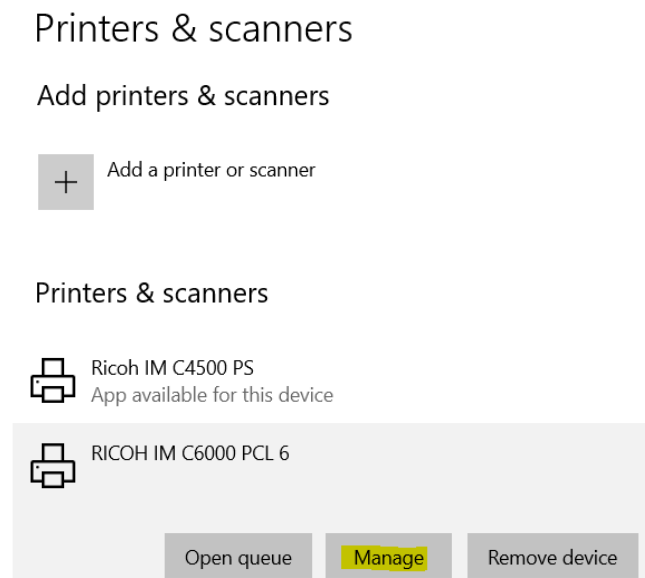
Comment:

Next Cancel

- 15) You can test the print driver by selecting “Print a test page”, once complete select “Finish”



- 16) Back at the Printers & Scanners screen, select the printer and select “Manage”



17) Select “Printer Properties”

🏠 RICOH IM C6000 PCL 6

Manage your device

Printer status: Idle

Open print queue

[Print a test page](#)

[Run the troubleshooter](#)

[Printer properties](#)

[Printing preferences](#)

[Hardware properties](#)

18) Select the “Accessories” tab to verify the proper accessories have been added to the print driver for the machine. Once verified select “OK”. This will complete the setup!

